

Building Insights into Age-Friendly Community (AFC) Initiative Impact

Emily A. Greenfield, PhD, and Natalie E. Pope, MBA, MSSW

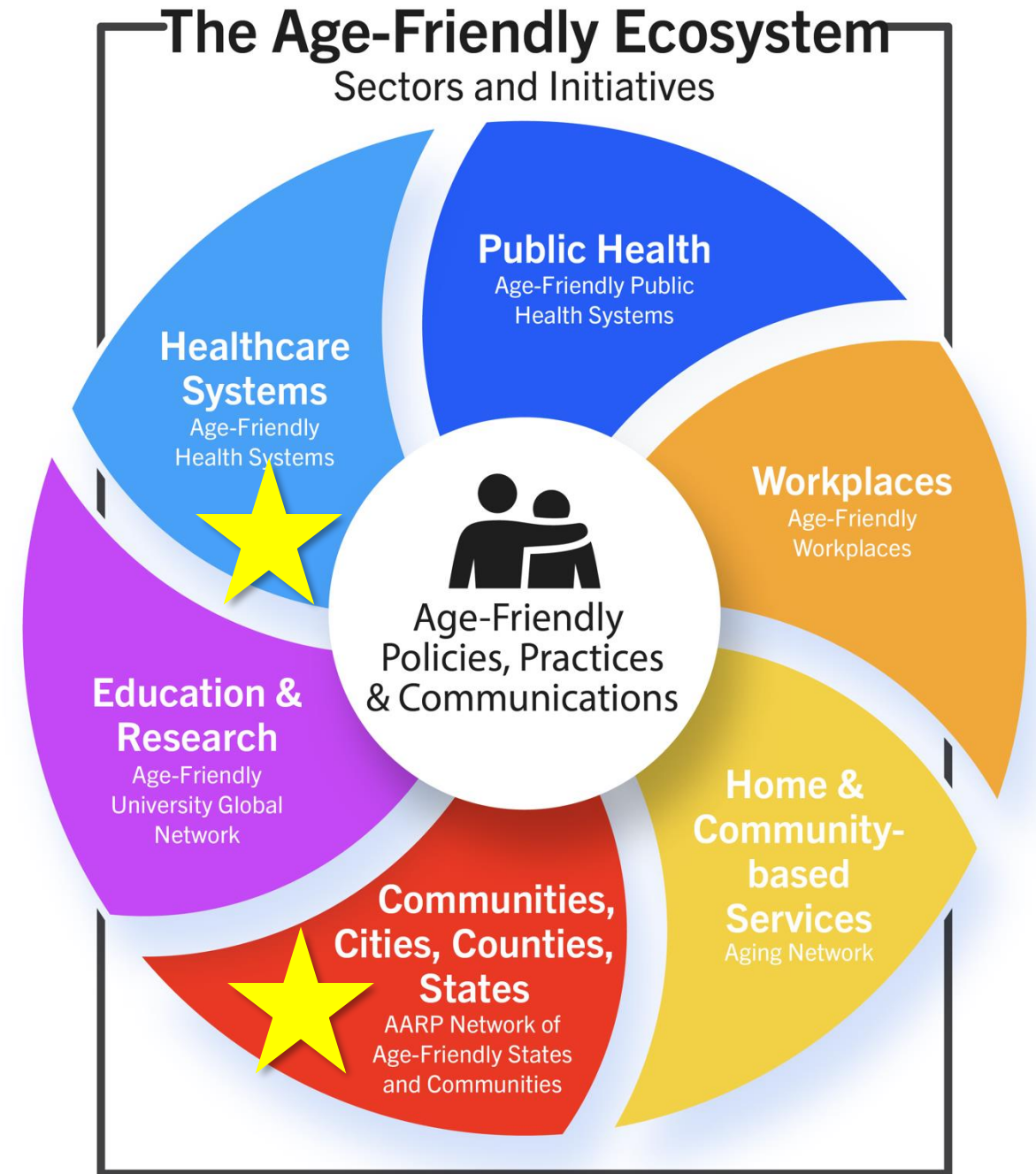
Age-Friendly Research Team

Hub for Aging Collaboration at Rutgers School of Social Work



RUTGERS UNIVERSITY
Hub for Aging Collaboration
School of Social Work

Age-Friendly as Social Innovation



What Drives Innovation Forward?





Photo Credit Tom Franklin

Project Timeline

2016-2023

2017-2019

Evaluation of Planning
& Implementation



2015-2016
Launch of Grant &
Evaluation Program



2020

Study of Operations
During COVID



2021

Formal Launch of Age-
Friendly North Jersey



2022-2023

Evaluation of
Sustainability & Outcomes



4 Reports



10+ Articles

- AFC logic models
- Roles of older adults
- Functions of events
- Advancing aging equity
- AFC response to COVID
- Interorganizational interactions
- Outcomes/systems change

go.rutgers.edu/agefriendly





AFC Outcomes within the Waters of Systems Change

Greenfield, E. A., & Pope, N. E. (2025). "It made me change the way I do business": Outcomes from age-friendly community initiatives as systems change. *The Gerontologist*, 65(1), gnae149. <https://doi.org/10.1093/geront/gnae149>



Data Collection

When Collected

Winter/Spring 2023

Number of Participants

26 Participants

Interview Duration

1 Hour

Interview Location

Zoom (Individual Interviews)

Software for Analysis

Dedoose

Analytic Modalities

Coding (Structural, Focused),
Analytic Memoing

Analysis Process

Two Analysis Phases

Iterative Practice-Based Knowledge Development

PHASE 1:

What was the “yield” of these initiatives? How can we summarize their accomplishments under broader conceptual buckets?

1. Creation and Enhancement of **Programs and Services**
2. Changes to the **Built Environment**
3. Changing the **Social Fabric** on Aging within the Community
4. Expanding Influence **Beyond the Local**



Iterative Practice-Based Knowledge Development

PHASE 2:

In what ways do these accomplishments reflect shifts in systems conditions?

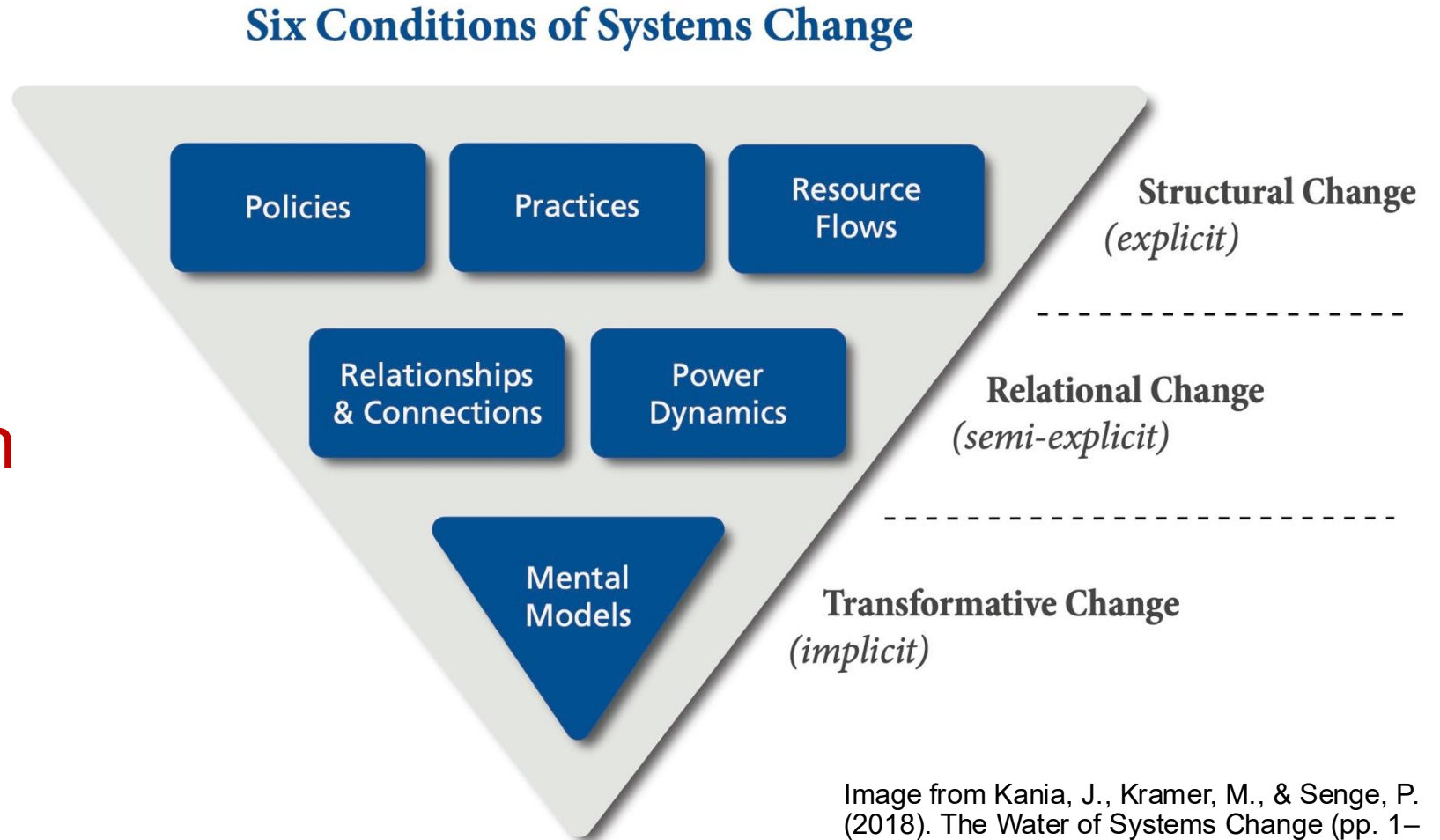


Image from Kania, J., Kramer, M., & Senge, P. (2018). The Water of Systems Change (pp. 1–18). *Reframing Social Change*. FSG.

https://www.fsg.org/resource/water_of_systems_change/

Iterative Practice-Based Knowledge Development

PHASE 2:

In what ways do these accomplishments reflect shifts in systems conditions?

Category	Manifestations of Change in Systems Conditions From AFC Initiatives
Practices	<ul style="list-style-type: none">○ Enhanced programs and services within the community<ul style="list-style-type: none">• Cultivating aging-focused programs and services within organizations with little prior involvement with older adults• Improving and expanding programs and services within organizations already focused on aging○ Stronger norms for collaborative practice on aging
Resource Flows	<ul style="list-style-type: none">○ Altered resource flows concerning the built environment○ Altered resource flows concerning the social environment○ Improving flow of information within communities
Policy	<ul style="list-style-type: none">○ Passage of local policies○ Improved implementation of local policies○ Influence on state policy
Relationships & Connections	<ul style="list-style-type: none">○ Establishing new and long-term collaborations through community events and programs○ Fostering new groups for convening leaders on aging○ Creating connections between older residents and key community actors
Power	<ul style="list-style-type: none">○ Growing influence of AFC core team on municipal administration○ Influencing power dynamics through municipal committees on aging
Mental Models	<ul style="list-style-type: none">○ Understanding of age-friendly lens and its benefits○ Recognition of importance of local services for older residents○ Viewing community-based organizations as a resource for community leaders on aging

Takeaways from Our Qualitative Approach



Long-Term
Contextual
Knowledge as
Key Strength



Research as
Relationship &
Trust Building
Practice



Integrating
Practitioner
“Voice” with
Theory



RUTGERS UNIVERSITY
Hub for Aging Collaboration
School of Social Work

**THANK
YOU**

Hub for Aging Collaboration
Rutgers School of Social Work

socialwork.rutgers.edu/aging
agingcollab@ssw.rutgers.edu



Follow Us on
LinkedIn



Join Our
Email List